

# CONTEMPO & CO

FURNITURE + LIGHTING

---

MAR 2024

## HOUSE MATERIALS - METAL, TIMBER & SHEET GOODS

---

# CONTEMPO & CO

FURNITURE + LIGHTING

---

MAR 2024

## CONTENTS

- 3 TIMBER
- 3 METAL
- 4 POWDERCOAT
- 6 POWDERCOAT - TEXTURE
- 7 LINOLIUM
- 11 CONTACT

### **CUSTOMERS OWN MATERIAL:**

Our house ranges represent a broad spectrum of materials that we believe hold up to a commercial level of wear and tear whilst maintaining a high level of finish.

We are more than happy to work with any customer specified materials from concept work to final production.

### **ADDITIONAL NOTES:**

Prices are subject to change.

The images in this catalogue are a guide only, and they may vary with different displays.

We recommend seeing a physical sample before ordering.

**TIMBER -**

**Contempo - Stain**

**SPECIES:**  
American Oak



White



Teak



Natural



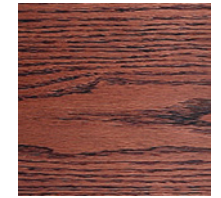
Golden Oak



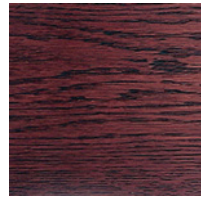
Baltic Pine



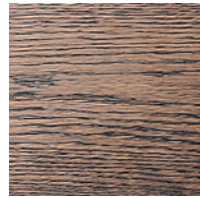
Maple



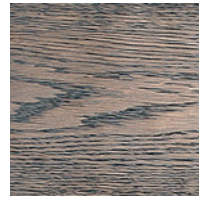
Jarrah



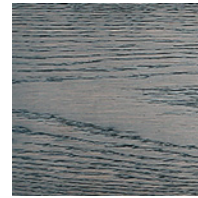
Rosewood



Warm Walnut



Walnut



Wenge

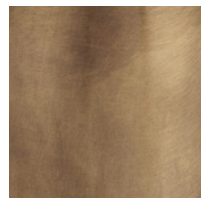


Black

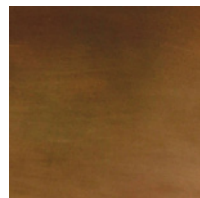
---

**METAL FINISHES -**

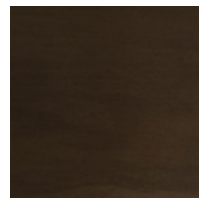
**Contempo - Var. Metals**



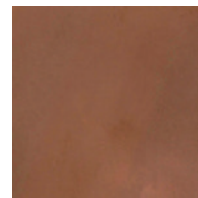
Brass - Medium



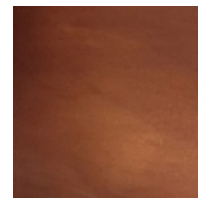
Brass - Dark



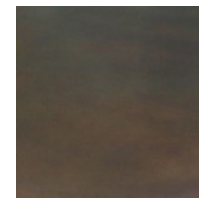
Brass - Black



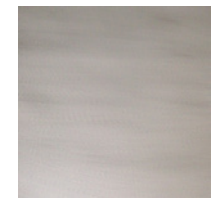
Copper - Light



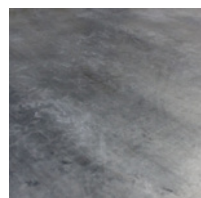
Copper - Medium



Copper - Dark



Zinc - Light



Zinc - Dark

**POWDERCOAT -**

**Dulux - Duralloy®**

**COMPOSITION:**

Polyester Thermosetting Powder

**ABRASION:**

< 9Nm (<80in/lb) Direct Impact

ASTM D5420 - Pass

**FIRE RETARDANCY:**

ISO 5560 - 1 & 2 (Group 1)

**ENVIRONMENTAL:**

GBCA ASTM D5116 - 2017

VOC Rating - Pass

Formaldehyde Rating - Pass



Black  
[G]



Black (C/M Night  
Sky®)[S][M]



Charcoal  
[G][S][M]



Monument  
[S][M]



Anotec® Dark Grey  
[M]



Ironstone  
[S][M]



Deep Ocean  
[S][M]



Blue Ridge  
[S]



Wedgewood  
[S]



Navy Blue  
[G]



Berry Grey  
[G][S]



Basalt  
[S][M]



Notre Dame  
[G]



Woodland Grey  
[S][M]



Wallaby  
[S][M]



Olde Pewter  
[S]



Windspray  
[S][M]



Transformer Grey  
[G]



Bluegum  
[M]



Stone Grey  
[S]



Shale Grey  
[S][M]



Apo Grey  
[S]



Anotec® Silver Grey  
[M]



Grey Nurse  
[G]



Oyster  
[M]



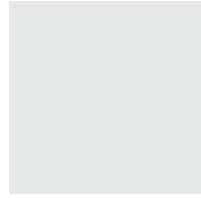
Southerly  
[M]



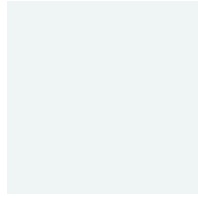
Surfmist  
[S][M]



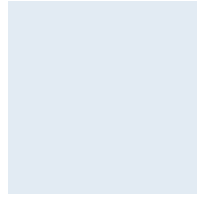
Shoji White  
[S]



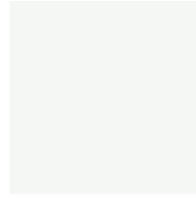
Dover White  
[M]



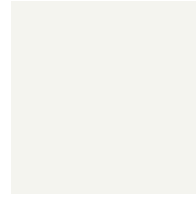
Pearl White  
[G]



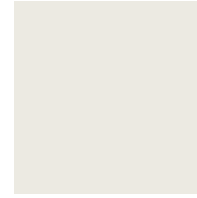
Bright White  
[G]



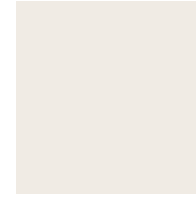
Classic Pearl White  
[G]



White  
[S][M]



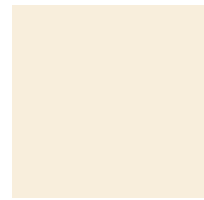
Whisper White  
[M]



Natural White  
[M]

POWDERCOAT -

Dulux - Duralloy® [Cont.]



White Birch  
[G]



Primrose  
[G]



Classic Cream  
[S][M]



Rivergum Beige  
[G]



Stone Beige  
[M]



Terrain  
[S]



Manor Red  
[S]



Territory Red  
[M]



Pink Sand  
[M]



Paperbark  
[S][M]



Dune  
[S][M]



Evening Haze  
[S]



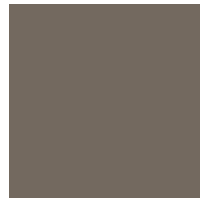
Cove  
[S]



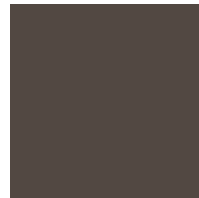
Riversand  
[M]



Gully  
[S]



Jasper  
[S][M]



Anotec® Mid Bronze  
[M]



Hammersley  
Brown [S]



Wollemi  
[M]



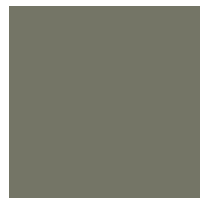
Deep Brunswick  
Green [G]



Cottage Green  
[S]



Wilderness  
[S]



Mangrove  
[S]



Pale Eucalypt  
[S][M]

**POWDERCOAT -**

**Dulux - Surreal® Effects**  
Mannex® Textured Range

**COMPOSITION:**  
Polyester Thermosetting Powder

**ABRASION:**  
ASTM D3363 - Pass

**ENVIRONMENTAL:**  
Not formulated with VOC's



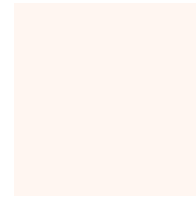
Black



Silver Lode Pearl



Suede



White

## LINOLIUM -

Flat - Marmoleum Desktop

**COMPOSITION:**

Linolium + Impregnated Paper

**THICKNESS:**

2.00mm

**LIGHTFASTNESS:**

500+ hrs - UV coef >6

**HEAT RESISTANCE:**

70°C

**FIRE RETARDANCY:**

AS/NZS 3837 - 1998 - Group 3

**ENVIRONMENTAL:**

ISO 14001 -

Environmental Management System

Climate Positive - Cradle to Gate

All Natural and Sustainable Materials

UL Certified

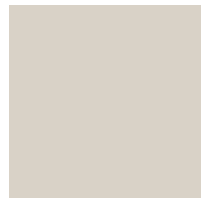
**FEATURES:**

ISO 9001 -

Quality Management System

SA 8000 -

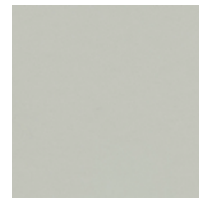
Social Accountabiliy Standard



Mushroom



Pebble



Vapour



Ash



Pewter



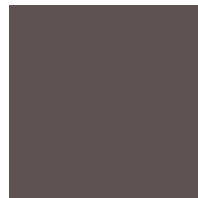
Smokey Blue



Charcoal



Pearl



Mauve



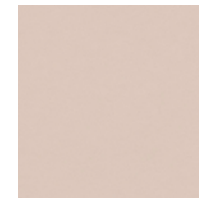
Iron



Nero



Conifer



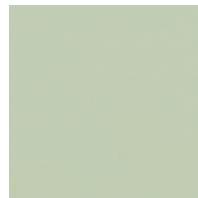
Powder



Burgundy



Salsa



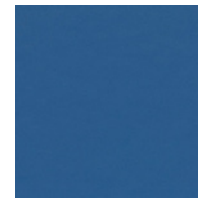
Pistachio



Olive



Aquavert



Midnight Blue



Orange Blast



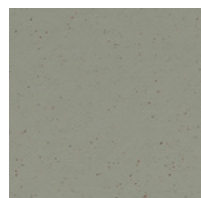
Spring Green

## LINOLIUM -

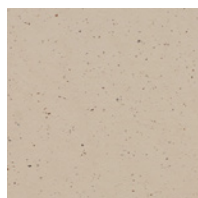
**Solid - Marmoleum Cocoa**

**DETAILS:**

Find under *Marbled - Marmoleum Fresco* (pg. 10)



Eucalyptus



Meringue



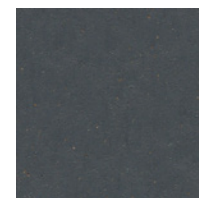
White Chocolate



Earl Grey



Nori



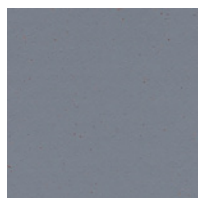
Chocolate Blues



Salted Caramel



Matcha



Indigo Milk

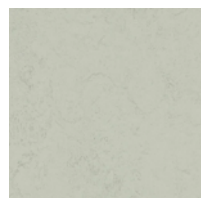
---

## LINOLIUM -

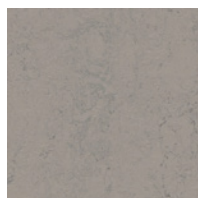
**Solid - Marmoleum Concrete**

**DETAILS:**

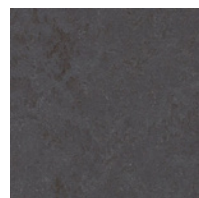
Find under *Marbled - Marmoleum Fresco* (pg. 10)



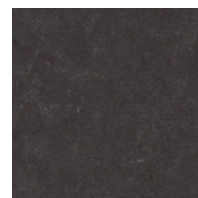
Asteroid



Sattelite



Cosmos



Black Hole



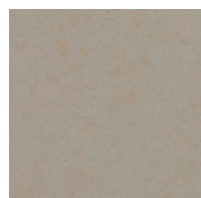
Comet



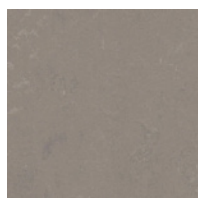
Nebula



Orbit



Beton



Liquid Clay



## LINOLIUM -

**Solid** - Marmoleum Walton

**DETAILS:**

Find under *Marbled - Marmoleum Fresco* (pg. 10)



Titanium



Cement



Lead



Grey Iron



Black



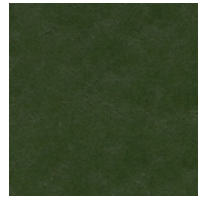
Terracotta



Berlin Red



Rosemary Green



Bottle Green



Petrol

---

## LINOLIUM -

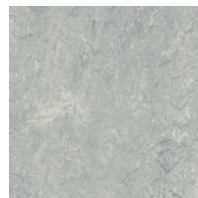
**Marbled** - Marmoleum Real

**DETAILS:**

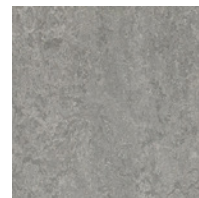
Find under *Marbled - Marmoleum Fresco* (pg. 10)



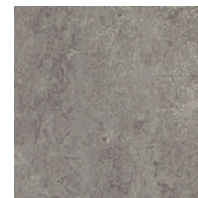
Mist Grey



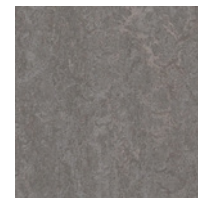
Dove Grey



Serene Grey



Eiger



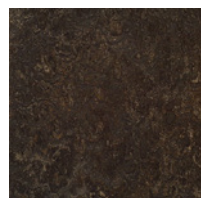
Slate Grey



Concrete



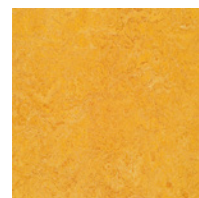
Graphite



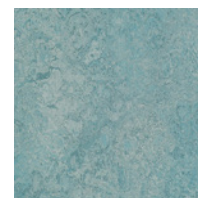
Dark Bistre



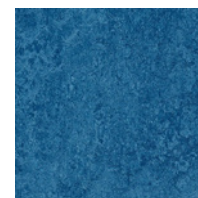
Rosato



Dandelion



Spa



Blue

## LINOLIUM -

### Marbled - Marmoleum Fresco

**COMPOSITION:**

Linolium + Woven Jute Backing

**THICKNESS:**

2.50mm

**LIGHTFASTNESS:**

500+ hrs - UV coef >6

**THERMAL RESISTANCE:**

0.17W/mK

**FIRE RETARDANCY:**

AS/NZS 3837 - 1998 - Group 3

**ENVIRONMENTAL:**

ISO 14001 -

Environmental Management System

Climate Positive - Cradle to Gate

All Natural and Sustainable Materials

UL Certified

**FEATURES:**

ISO 9001 -

Quality Management System

SA 8000 -

Social Accountabiliy Standard



Black



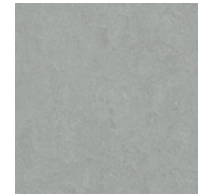
Volcanic Ash



Lava



Eternity



Cinder



Moonstone



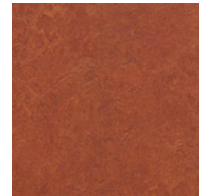
Silver Shadow



Arabian Pearl



Shrike



Henna



African Desert



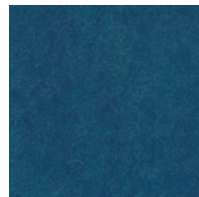
Lemon Zest



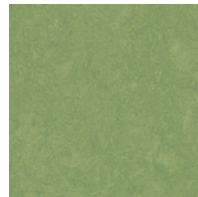
Kyoto



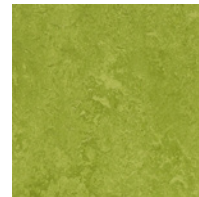
Scarlet



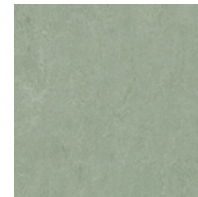
Marine



Leaf



Green



Sage

## **CONTACT**

[info@contempoco.com.au](mailto:info@contempoco.com.au)

(02) 9820 6111

[contempoco.com.au](http://contempoco.com.au)

8 Lincoln Street, Minto, 2566, NSW

